

# SunPower® Helix® Y-Type Carports

Single-Tilt and Dual-Tilt Canopies



## Flexible solutions for your environment

With both single- and dual-tilt canopy solutions, SunPower® Helix® Carports easily adapt to regional weather conditions—from heavy snow loads to torrential rains. Just one of many ways we're customizing solutions to meet your organization's unique energy and sustainability challenges.

## Industry-leading design and engineering

SunPower® Helix® Carports are the industry's only fully integrated carport solutions, combining SunPower's high-efficiency, high-performance solar panels with an optimized mechanical and electrical architecture. The result: faster deployment times and minimal disruption to your organization.

## A foundation for sustainable growth

SunPower's integrated carport designs offer a variety of innovative options, providing more opportunities for your organization to enhance its sustainability efforts with water management, battery storage, electric vehicle charging and energy-efficient lighting.



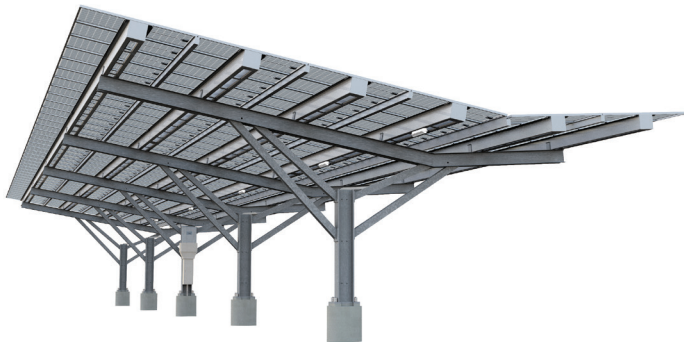
# SunPower® Helix® Y-Type Carport System

## The only fully integrated carport solution on the market

Uniquely engineered to maximize the benefits of SunPower® solar panels, Helix® systems deliver up to 60% more energy in the same space over 25 years.<sup>1</sup>

### Dual Tilt

Snow and ice are directed to the center of our patented dual-tilt canopies to melt safely away from vehicles and foot traffic.

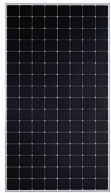


### Single Tilt

Our most ubiquitous carport structure, single-tilt canopies offer a simple, elegant and cost-effective path to energy security.



### Industry-leading solar panels



SunPower® Maxis® cell-based panels offer the best choice for constrained areas.

- High efficiency
- High energy production
- 40-year projected useful life<sup>2</sup>
- Unparalleled in durability<sup>3</sup>

### SunPower® EnergyLink® Monitoring Software



SunPower's proprietary energy intelligence platform delivers powerful insights about your system's energy production and use, with accurate and intuitive reports that highlight financial savings.

## Innovative Options



### Water Management

Manages water runoff on the underside of the canopy, providing the potential for re-use in onsite irrigation.



### Battery Storage

Couples with canopies to achieve demand charge savings and better utilization of energy produced.



### EV Charging

Enhances functional use of carports for customers and employees, while promoting EV adoption.



### Lighting

Integrates energy-efficient LED lighting within canopies to ensure parking areas stay well lit at night.

## Warranties

- |                        |          |                                   |          |
|------------------------|----------|-----------------------------------|----------|
| • SunPower panels      | 25 years | • Inverter <sup>4</sup>           | 10 years |
| • Helix mechanical BOS | 25 years | • SunPower carport structure      | 25 years |
| • Helix electrical BOS | 10 years | • EnergyLink® monitoring hardware | 10 years |

<sup>1</sup> SunPower 450 W, 22.2% efficient, compared to a Conventional Panel on same-sized arrays (330 W multi, 17% efficient, approx. 2 m<sup>2</sup>), 5% more energy per watt (based on PVSIM runs for avg US climate), 0.5%/yr slower degradation rate (Jordan, et. al. Robust PV Degradation Methodology and Application. PVSC 2018).

<sup>2</sup> SunPower Module 40-year Useful Life. SunPower whitepaper. 2013.

<sup>3</sup> Jordan, et. al. Robust PV Degradation Methodology and Application. PVSC 2018.

<sup>4</sup> Manufacturer pass-through warranty. Warranties of 15 or 20 total years are available directly through manufacturer.